

## **Introduction**

SLCDV2 works with SC2004 20x4 Characters Serial LCD. Its purpose is to provide information to be display on the secondary computer display.

8 Display Options is available

- Large Characters Clock
- Time and Date with World Time
- CPU Information – CPU and Memory Usage, Temperature and Fan
- Network Information – Computer Name, IP Address, Upload and Download Speed
- WinAmp Plug-in to display WinAmp status and MP3 Information
- Web Weather Information of International Cities
- Web Information on Stock Quote
- POP Email Header and Sender Information

SLCDV2 supports Windows XP/2000/98

SpeedFan and WinAmp Software must be installed in your system.

SpeedFan is Free and can be downloaded from <http://www.almico.com>

WinAmp is also Free and can be downloaded from <http://www.winamp.com>

## **Setup**

SLCDV2 interfaces with computer serial port. At least one port must be available on your system.

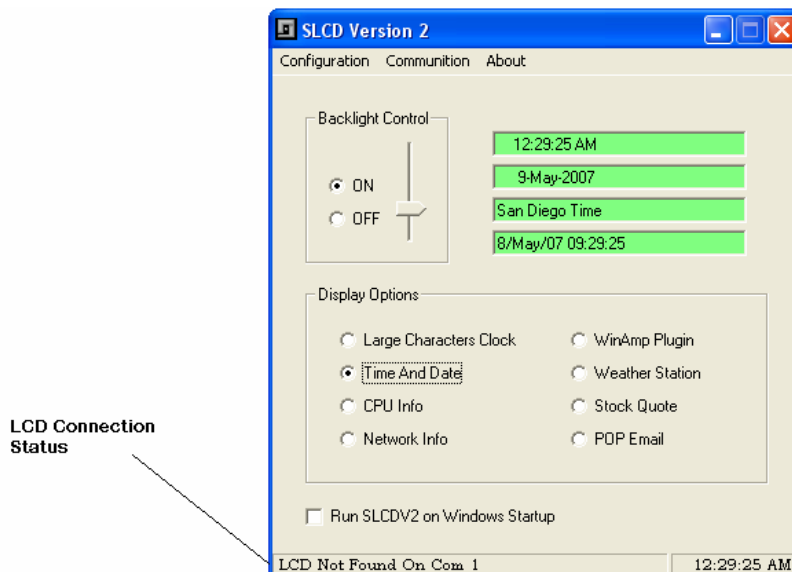
By default, SLCDV2 is configured to COM 1

If the port is correct, you should see the slcdv2 icon in the system tray.

Else, you'll need to change it to the appropriate port with the serial LCD connected to.

Select "Communication" from menu and click on appropriate port.

If the setting is correct you should see "LCD Connected" in the Status Bar



Check “Run SLCDV2 on Windows Startup” if you want SLCDV2 to be automatically loaded when you start Windows.

**World Time Setup**

Configuration → World Time

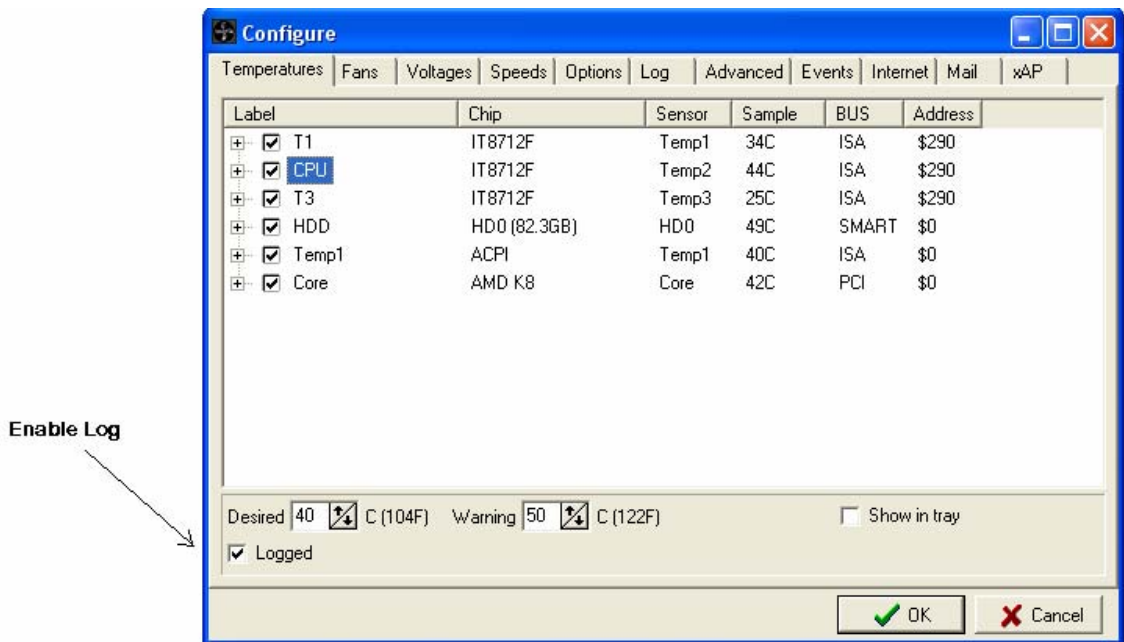


Select Destination time zone to be displayed. Type the destination caption. Check “Observe Daylight Saving” where applicable

Close the windows

**CPU Info and SpeedFan Setup**

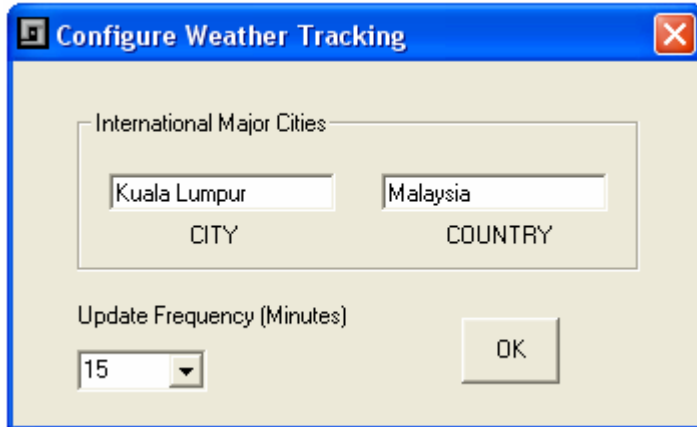
SLCDV2 reads SpeedFan log file and display them on LCD. You need to enable the log option on SpeedFan.



SLCDV2 displays up to four temperature and one fan speed.

### **Weather station Setup**

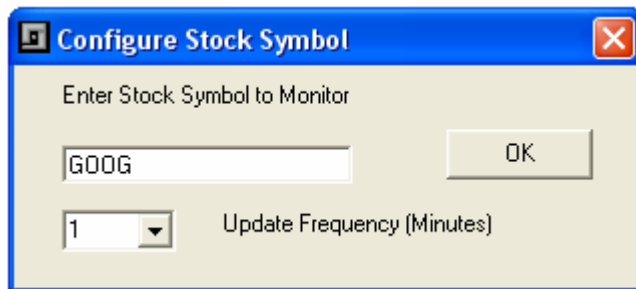
Configuration → Weather



Enter the City and Country that you wish the weather track.  
Select how often it should be updated.  
Click OK when Done

### **Stock Quote Setup**

Configuration → Stock



Enter the stock symbol you wish to track. All Major bourses supported.  
Select how often this should be updated.  
Click OK when Done

### **Operation**

Operation is simple. Select the information you want to display by clicking on the radio button.

Note : CPU Info options need FanSpeed software to be installed and log enabled.

FanSpeed is a freeware available on the web.

WinAmp is needed for WinAmp Plug-in option to work.

Weather and Stock Quote options need internet connection.

### **LCD Screen Snapshots**



Highly visible Large Characters Clock occupying all four rows. It shows the current system time



Display local time and Date as well as selected destination time and date. The software will automatically observed daylight saving.



CPU Info: CPU Usage Percentage, Memory usage percentage. Temperature and Fan Speed reading from SpeedFan log file



Network info: Shows computer name, IP address , internet connection status, internet download and upload speed.



WinAmp Plug-in showing current playing song information.



Weather information on selected City.



Stock quote information on selected Stock Symbol showing stock name, opening price, last transaction price and time, volume and percentage change.

Support major bourses worldwide



POP mail showing number of unread messages in your Inbox ( tested on Outlook Express, should work on other email client as well)

Also shows the sender, the subject and time and date of the first unread message.

Slcdv2 is absolutely free and available from [www.siliconcraft.net/download.htm](http://www.siliconcraft.net/download.htm)