

SCZoneTime618 LED Synchronized Clock

SCZoneTime6 is a 6 digits 7 Segments LED Clock Module that display time information. Works with SCZoneTime Software it synchronize and display time information of selected time zone.

1.8 inch Digit Height, ultra bright red LED.



Fig 1: Time Zone Display

Up to 5 modules can be networked to display 5 zones time information.

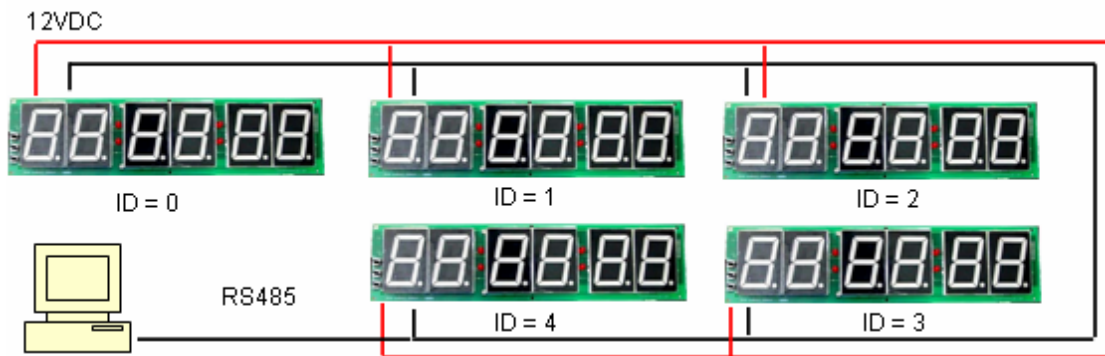


Fig 2: Connection Diagram



Fig 3: Front View

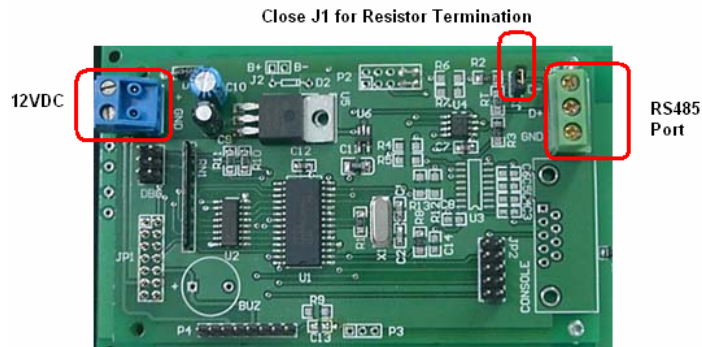


Fig 4: Back View

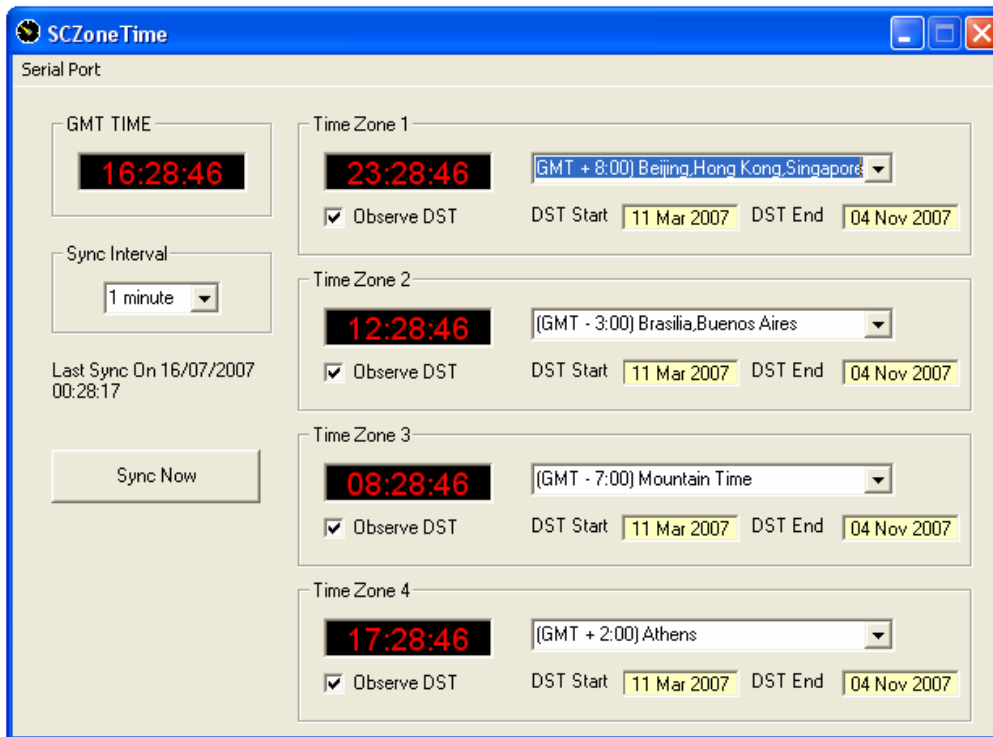
SCZoneTime Software

Fig 5: SCTestimeZone Software Screenshot

SCZoneTime Software is available from www.siliconcraft.net/download.htm

Module with ID = 0 is synchronize with GMT time
 Module with ID = 1 is synchronize with Time Zone 1
 Module with ID = 2 is synchronize with Time Zone 2
 Module with ID = 3 is synchronize with Time Zone 3
 Module with ID = 4 is synchronize with Time Zone 4

If Daylight Saving is observed on the selected time zone, check Observe DST. User can set the Daylight Saving Starts and Ends Date by click on the DST Start and DST End.

Module ID is set via the push buttons.

Computer running SCZoneTime should have the RS485 connection on its serial port. Make sure the correct com port number is selected.

Synchronization interval can be set as every 1 minute,15 minutes, 30 minutes or 1 Hour. SCZoneTime is automatically loaded on Windows Startup and remains on the system tray.



Once Synchronized, SCZoneTime6 modules can run without the computer connection. However, for accurate time information it should be synchronized at least once every week.

Setting the Module ID

By default, ID = 0. It will display the GMT time. User can set the ID using the push buttons B1,B2 and B3.

SCZoneTime618 LED Synchronized Clock

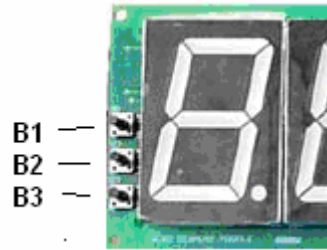


Fig 6 : Push Buttons Location

Press B1 + B3 simultaneously to enter ID setting mode.
 Display shows "Id 0"
 Press B2 or B3 to change.
 Press B1 when done.

Changes is saves on the non volatile memory and remains unchanged until next setting.

Mechanical Specification

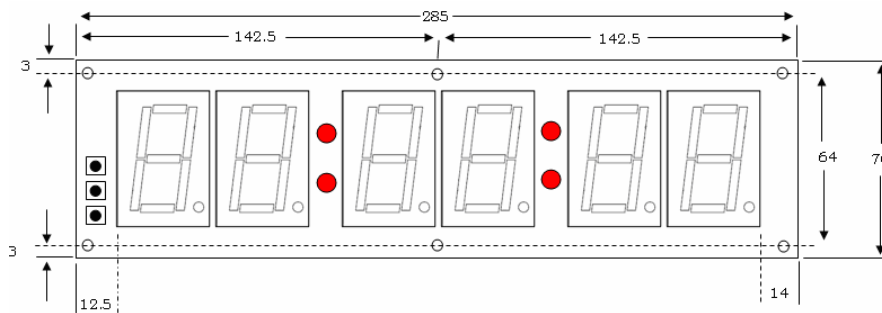


Fig 7 : Mechanical Dimension (Front)

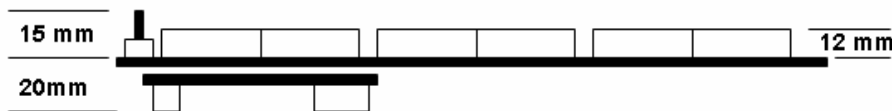


Fig 8 : Mechanical Dimension (Back)

Electrical Specification

Operating Temperature : 0°C to 70°C
 Storage Temperature : -20°C to 80°C
 Operating Relative Humidity : 90% max non-condensing
 Supply Voltage: 10-12VDC (1A)
 Supply Current: 600mA typical

Maximum RS485 cable length: 1000 meters

Time Zone Information

(GMT - 12:00) International Date Line West
 (GMT - 11:00) Midway,Samoa
 (GMT - 10:00) Hawaii"
 (GMT - 9:00) Alaska"
 (GMT - 8:00) Pacific Time"
 (GMT - 7:00) Mountain Time"
 (GMT - 6:00) Central Time"

SCZoneTime618 LED Synchronized Clock

(GMT - 5:00) Eastern Time"
(GMT - 4:00) Atlantic Time"
(GMT - 3:30) Newfoundland"
(GMT - 3:00) Brasilia,Buenos Aires"
(GMT - 2:00) Mid Atlantic"
(GMT - 1:00) Azores"
(GMT) London"
(GMT + 1:00) Amsterdam"
(GMT + 2:00) Athens"
(GMT + 3:00) Baghdad"
(GMT + 3:30) Tehran"
(GMT + 4:00) Abu Dhabi"
(GMT + 4:30) Kabul"
(GMT + 5:00) Islamabad"
(GMT + 5:30) New Delhi"
(GMT + 5:45) Kathmandu"
(GMT + 6:00) Dhaka"
(GMT + 6:30) Rangoon"
(GMT + 7:00) Bangkok,Jakarta"
(GMT + 8:00) Beijing,Hong Kong,Singapore"
(GMT + 9:00) Tokyo,Seoul"
(GMT + 9:30) Adelaide,Darwin"
(GMT + 10:00) Brisbane,Sydney"
(GMT + 11:00) Solomon Island"
(GMT + 12:00) Auckland,Fiji"